

Highway Asset Management

Harvey Cullen

20th June 2017

PEOPLE

Safety and health
Our people
Community involvement

PLANET

Climate change
Environmental stewardship
Resource efficiency

PERFORMANCE

Economic value
Governance and ethics
Communication

SOLUTIONS

Sustainable supply chain
Innovation and quality
Sustainable construction

Tarmac Approach to Sustainable Construction

IN Built

Our efforts to continuously improve the sustainable performance of both our business and our products. By ensuring raw materials are responsibly sourced, minimising environmental impact, reducing carbon, water and waste, increasing recycled contents and improving transport efficiency.



IN Construction

Our solutions can make a significant contribution to improving the sustainability of the construction process; enhancing safety, reducing programme times, saving raw materials, minimising waste and reducing equipment usage.



IN Use

Our solutions deliver benefits throughout the lifecycle of a building or asset; providing enhanced durability, reducing maintenance and saving energy, carbon and water.



IN Support

The wide range of services we provide help our customers design and build more sustainably, from product carbon footprints and sustainable construction solution guides, to data for Building Information Modelling (BIM) and Asset Management





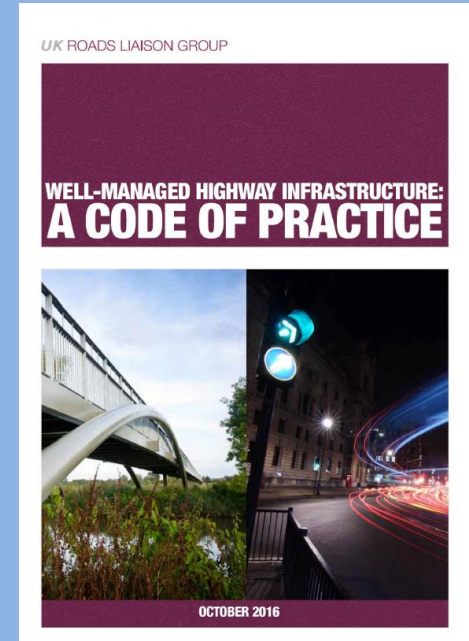
Partnerships and services designed to build high quality assets and excellence in managing them

- ✓ Highway infrastructure asset valuation
- ✓ Funding bid support
- ✓ Investment modelling
- ✓ Real time data collection
- ✓ BIM - Better information management
- ✓ ISO55000 International Asset Management standard
- ✓ Officer training and Continuous Professional Development
- ✓ Resilient and effective materials programme
- ✓ Network and backlog works schedules

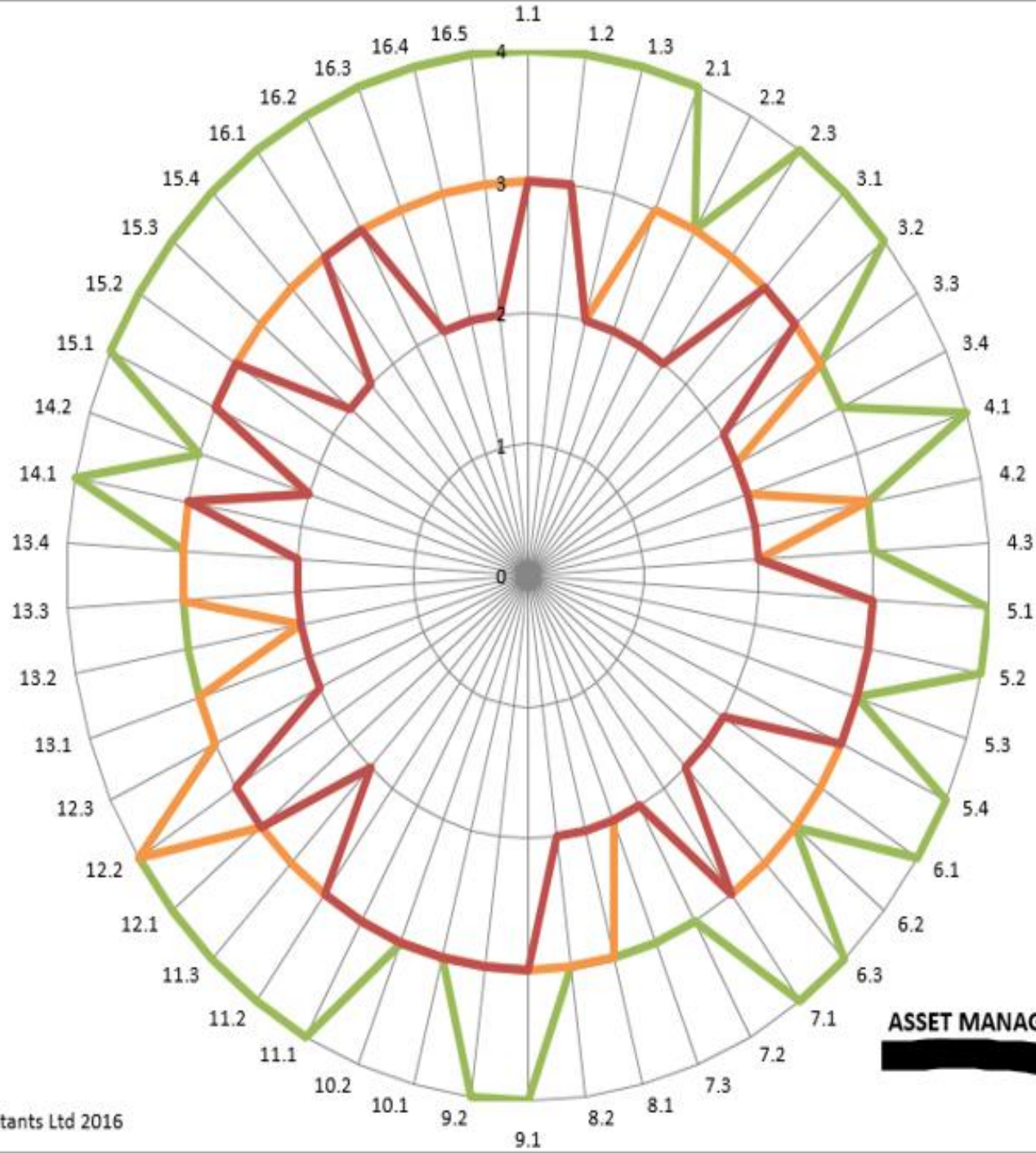


Maturity Assessment

- Understand your current status
 - Asset management
 - Incentive Fund Banding
 - Code of Practice
- Set realistic targets
- Prioritise actions
- Implementation support
- Critical friend advice



0 = Innocent
 1 = Aware
 2 = Developing
 3 = Competent
 4 = Excellent



Long-term
 Target Score
 (Mar 2021)

Short-term
 Target Score
 (Mar 2017)

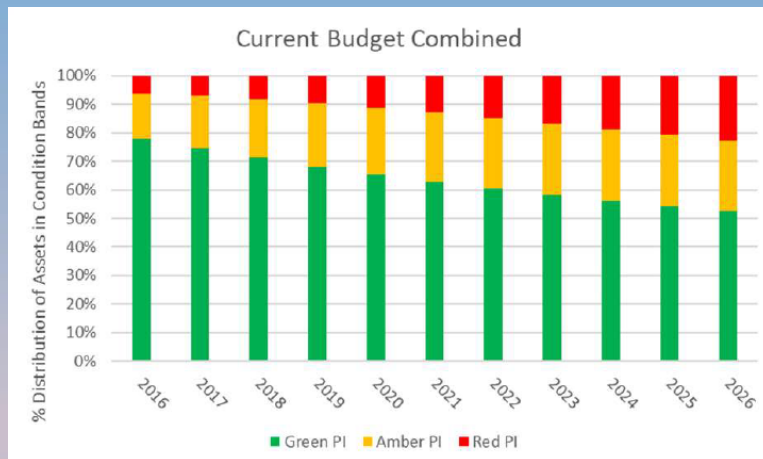
Current Score
 (Dec 2016)

ASSET MANAGEMENT MATURITY ASSESSMENT
COUNCIL
Dec 2016

Funding and budgets

From the initial maturity assessment through to Incentive Fund Band 3 submission evidence we can provide an accurate and complete view of all your highways infrastructure assets.

- ✓ A tailored approach to identify individual asset management needs
- ✓ Maturity assessment to define the support needed
- ✓ Assistance in achieving Band 3 DfT Incentive Funding maximum allocations



HIGHWAY VIEW

Visual condition survey based on HD imaging, delivering a condition map and environmental view

Carriageways, Footpaths, Street Furniture, Road Markings and Drainage

Defects identified

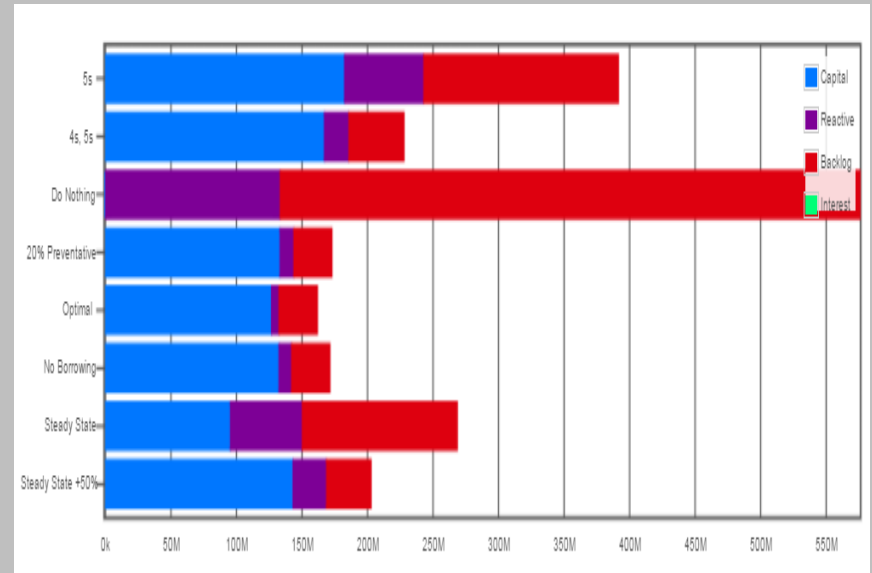
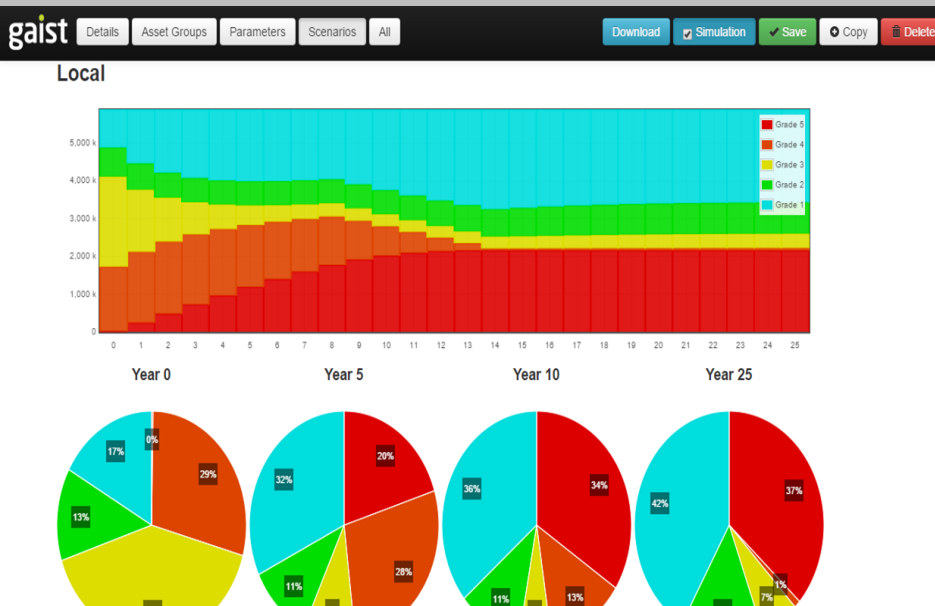
Condition graded

Integration into existing systems



GAIST Modelling

Risk based deterioration modelling, using probability and regression analysis



- Highway View, local and other data input
- Scenarios created
- Optimisation modelling
- Funding and Bids
- Schemes proposed

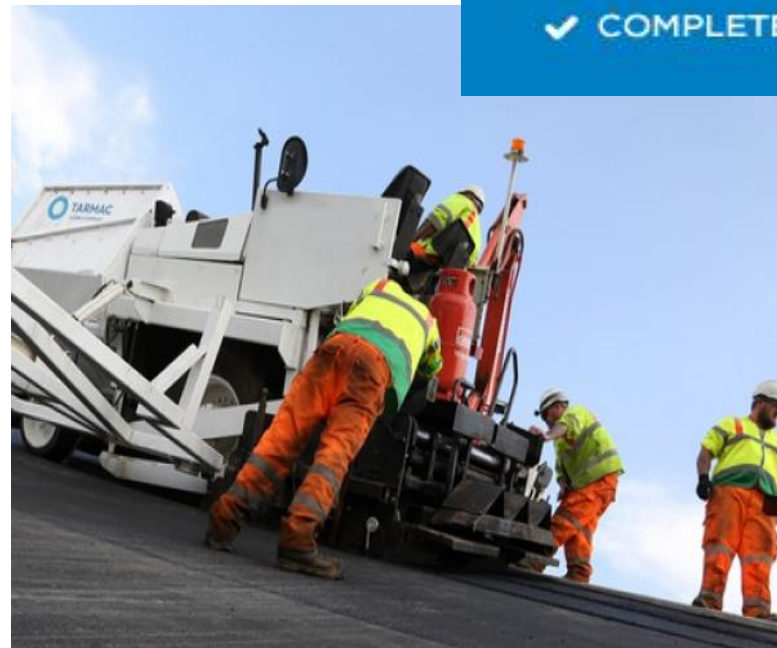
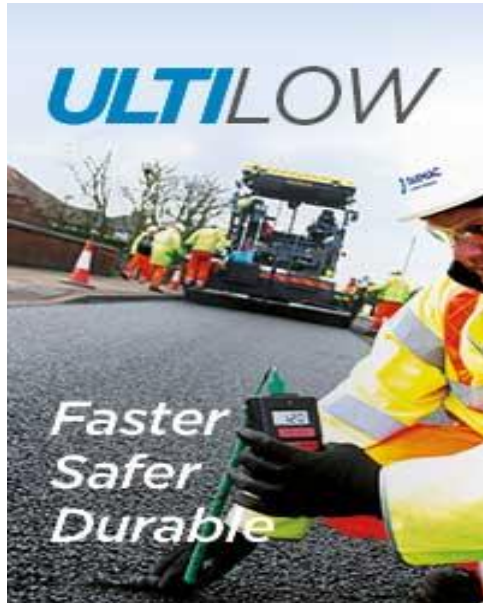
What's in it for Tarmac

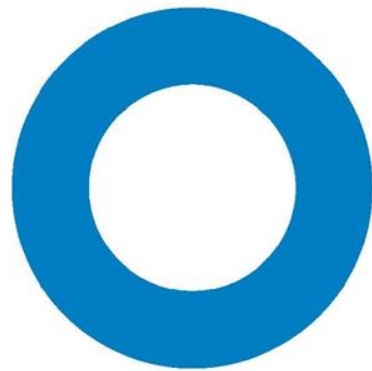
By working closely with our customers it means we can more easily develop optimised works programmes and maintenance strategies that help to promote innovation, deliver better performance and improve customer satisfaction.

Future maintenance and programme planning

A collaborative end to end, fence to fence approach aiming to achieve a resilient network to pass on to the next generation.







TARMAC
A CRH COMPANY

WORKING IN PARTNERSHIP WITH

gaist

METIS